



*jordanfishwick*

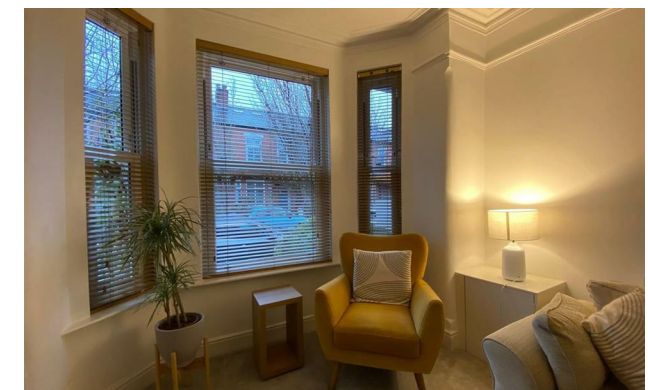
Cartwright Road  
Chorlton Green





# Cartwright Road Chorlton Green M21 9EY

£2,150 Per Calendar Month



## The Property

\*\*\*\*\* AVAILABLE BEGINNING OF JANUARY \*\*\*\*\* A beautifully presented three bedroom mid-terraced house situated on a quiet and highly regarded road in Chorlton Green. The property is close to the ever popular Beech Road with its quaint Cafes and boutique shops. The accommodation is tastefully furnished and decorated throughout and briefly comprises; entrance hall, bay fronted open plan lounge with open fire open plan to dining room, modern kitchen with range of appliances, two good sized double bedrooms with built-in storage, single bedroom/study, modern bathroom and a small rear yard.

\*\*\*\*\* To arrange a viewing please call 0161 860 4444

\*\*\*\*\*

## Directions



- Council Tax B - EPC D
- Stunning Mid-Terrace
- Three Double Room
- Chorlton Green location
- Furnished
- Highly regarded road
- Available January

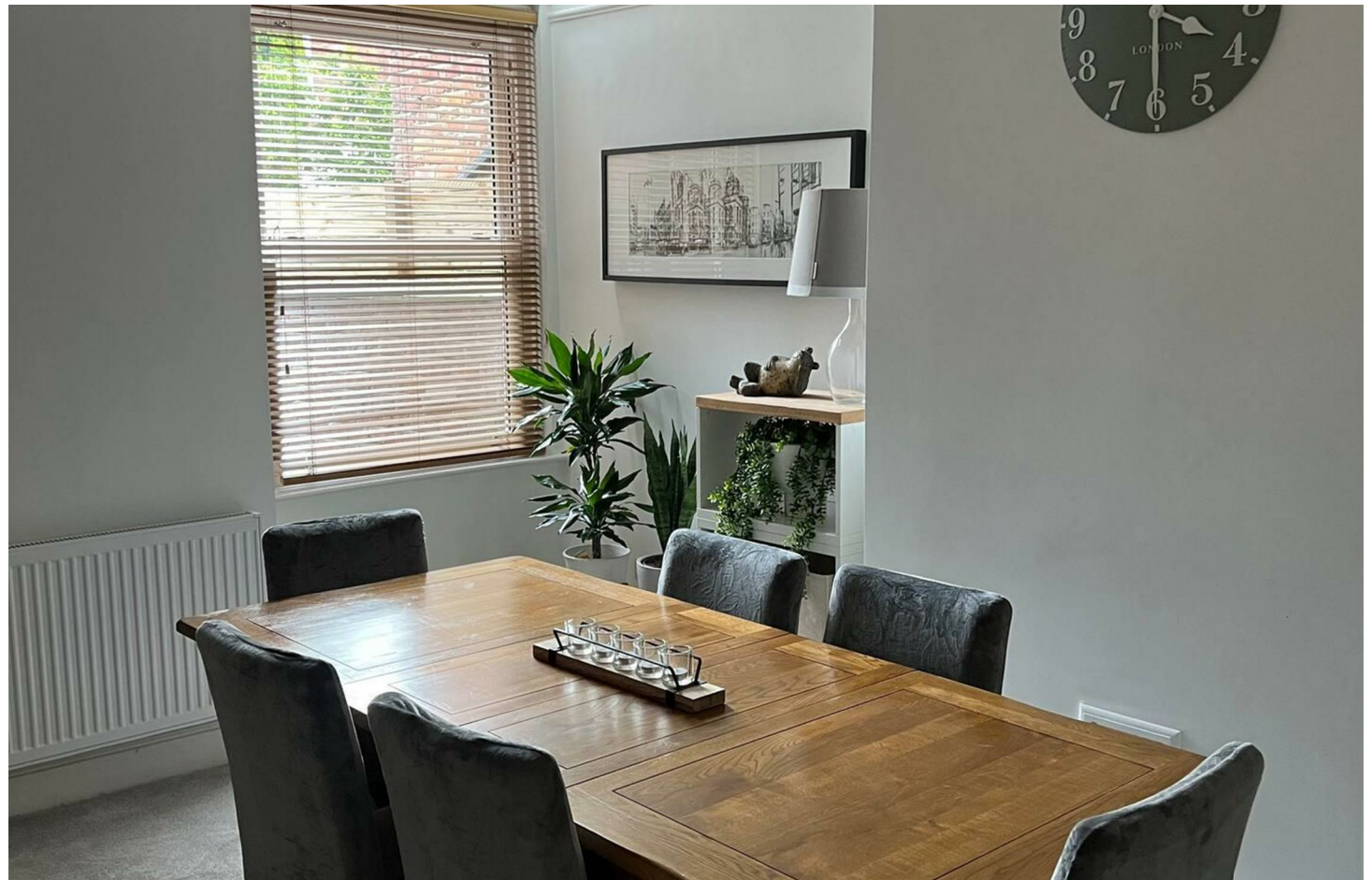
Postcode - M21 9EY

EPC Rating - D

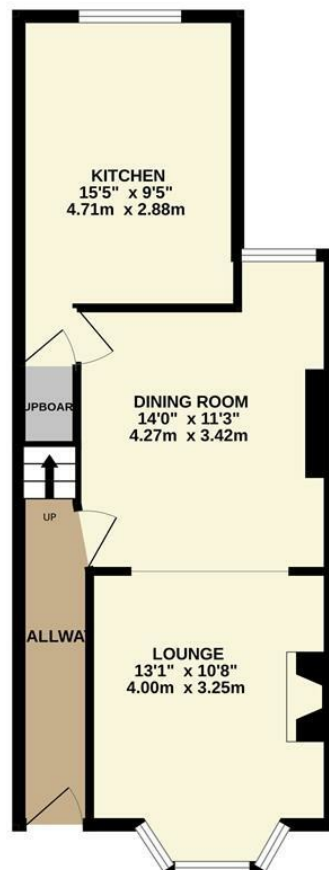
Floor Area - sq ft

Local Authority - Manchester City Council

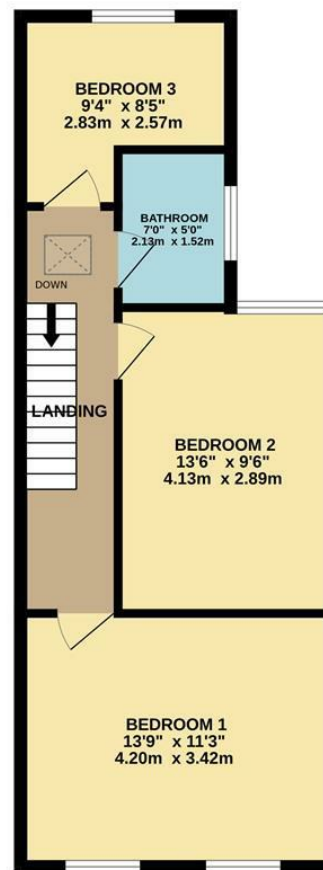
Council Tax - B



GROUND FLOOR  
450 sq.ft. (41.8 sq.m.) approx.



1ST FLOOR  
461 sq.ft. (42.8 sq.m.) approx.



TOTAL FLOOR AREA : 911 sq.ft. (84.6 sq.m.) approx.

Whilst every attempt has been made to ensure the accuracy of the floorplan contained here, measurements of doors, windows, rooms and any other items are approximate and no responsibility is taken for any error, omission or mis-statement. This plan is for illustrative purposes only and should be used as such by any prospective purchaser. The services, systems and appliances shown have not been tested and no guarantee as to their operability or efficiency can be given.  
Made with Metropix ©2025



These particulars are believed to be accurate but they are not guaranteed and do not form a contract. Neither Jordan Fishwick nor the vendor or lessor accept any responsibility in respect of these particulars, which are not intended to be statements or representations of fact and any intending purchaser or lessee must satisfy himself by inspection or otherwise as to the correctness of each of the statements contained in these particulars. Any floorplans on this brochure are for illustrative purposes only and are not necessarily to scale.

Offices at: Offices at Chorlton, Didsbury, Disley, Hale, Glossop, Macclesfield, Manchester Deansgate, Manchester Whitworth Street, New Mills, Sale, Wilmslow and Withington

410-412 Barlow Moor Road, Chorlton, Manchester, M21

01618604444<sup>8AD</sup>

chorlton@jordanfishwick.co.uk  
www.jordanfishwick.co.uk